

Getting Ready for Summer: Shading East and West Windows

East or West facing windows let in the summer sun. Each square metre of unshaded window heats your home by the same amount as a one bar radiator.

In a living room with west-facing windows with blinds but no external shade, the room can be 3 degrees hotter for several hours, than the same room with awnings or shade cloth over windows.

WHAT ARE MY OPTIONS FOR SHADING WINDOWS?

There are many to choose from:

- **Plant trees or tall shrubs**
 - very effective and low cost, but
 - needs space to grow away from house
- **Shaded pergola or sail structures**
 - very effective in summer and removable in winter,
 - provides an outdoor shaded living space, but
 - needs space to build out from house
- **Window tinting**
 - Can be applied to any window,
 - Moderate cost (\$300-\$400)*, but
 - Reduces light all year round

continued – please turn over

DID YOU KNOW?

A curtain or blind on the inside will reduce this heat by around 35%. Shading the outside can reduce the heat by up to 80%.

So choose external shading!

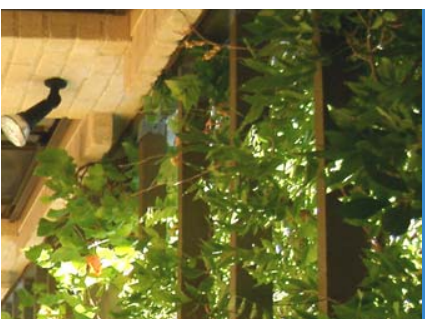


HOW THE GARDEN CAN HELP?

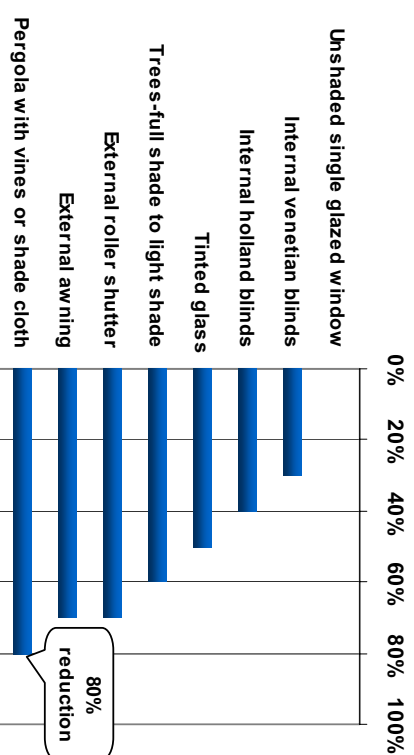
Avoid paving outside your north, east or west-facing windows. This paving soaks up heat during the day and radiates it at night. Try ground cover or shrubs alongside walls and windows instead.

HUNTING AROUND FOR PRODUCTS AND PRICES?

Look in the YellowPages under headings such as 'Awnings', 'Window Roller Shutters', 'Shade Structures & Sails' and 'Carport & Pergola'. You can buy shade cloth and sails from hardware stores too.



Amount of heat blocked compared to unshaded glass



WHAT ARE MY OPTIONS FOR SHADING (continued)

- **Roller shutters**
 - Reduces heat loss in winter as well as heat gain in summer,
 - Adjustable any time of day and improves security and noise control, but
 - More costly (from \$700 for manual and \$950 for motor controlled), and
 - **Awnings or external blinds**
 - Minimal space requirements,
 - Adjustable for the time of day and season, but
 - Costly for product and installation (\$400-\$700 depending on the material); and
 - May not fit all window types.
- Or for a low cost solution,** simply hang a roll of shade cloth from the eaves.
- * indicative costs for a 2-3 square metre window in brick wall.



Australian Government

Department of the Environment and Water Resources

Australian Greenhouse Office

This brochure is largely based on materials from the EnergyActions project supported by the Sustainable Energy Development Office. The information contained in this brochure is provided in good faith. However, the accuracy and appropriateness of that information is not guaranteed.



SOUTHERN METROPOLITAN REGIONAL COUNCIL

This project is supported by the Department of Environment and Water Resources, Australian Greenhouse Office, and implemented by the Southern Metropolitan Regional Council (SMRC) through a regional partnership with the Cities of Canning, Cockburn, Fremantle and Rockingham, and the Towns of East Fremantle and Kwinana.